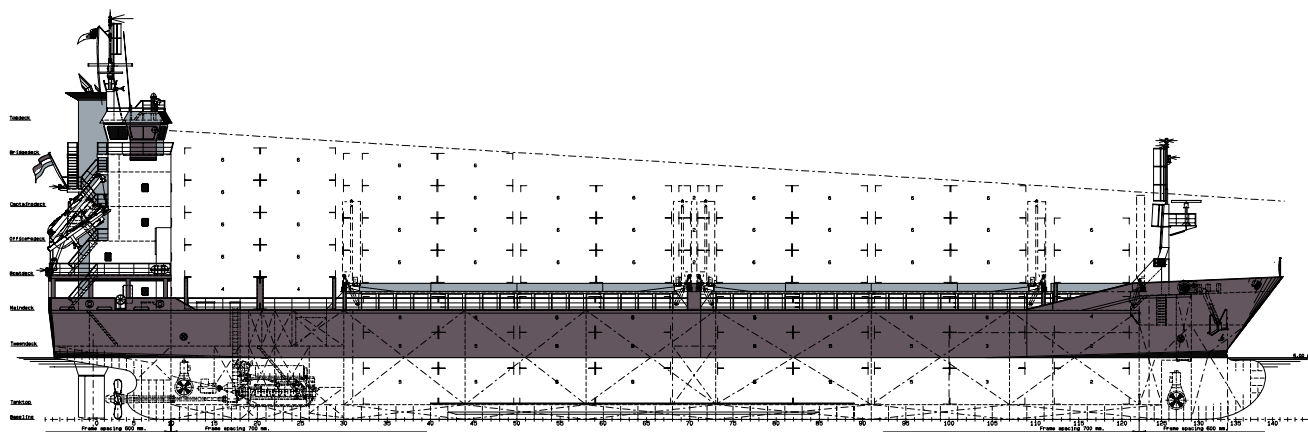


## 350 TEU Container Vessel



### Class Notation

Germanischer Lloyd #100 A5, Containership, Unrestricted Navigation, Solas II-2 Reg. 19, #MC-Aut, Ice Class E2.

### Principle dimensions and capacities:

Length over all:	99,97	m
Length between perpendiculars:	91,55	m
Breadth moulded:	15,85	m
Depth to maindeck:	8,85	m
Draught (abt.):	5,00	m
Deadweight at T = 6,78 m:	3650	t
Gross tonnage (abt.):	3900	GT
Netto tonnage (abt.):	1200	NT

### Cargo Hold

Three cargo holds, covered with hydraulic folding hatchcovers		
Hatchway opening hold 1-1:	6,30 x 10,60	m
Hatchway opening hold 1-2 :	25,20 x 13,20	m
Hatchway opening hold 2 :	25,20 x 13,20	m

### Container capacity:

	TEU	FEU/TEU	30 ft.	45 ft
Hold :	124	56/12		
Deck :	230	109/12		
Total :	354	165/24		

Capacity is 213 TEU @ 14 tons (45% vcg).

Reeferpoints abt.: 60 pcs.

### Tank capacities:

HFO (IFO 380) capacity:	310	m <sup>3</sup>
Gasoil capacity:	65	m <sup>3</sup>
Potable water capacity:	50	m <sup>3</sup>
Ballast water capacity:	2615	m <sup>3</sup>

### Speed:

Trial speed: 15,0 kn  
(Established at max.draught and M.E. output of 90% MCR and disabled shaft generator)

### Construction particulars:

Double bottom and side tanks enclose two (2) cargo holds, designated for water ballast and fuel oil. Construction based on longitudinal- and transverse framing.

### Ships outfitting:

Two (2) electric-hydraulic driven anchor/mooring winches, with each one (1) warping heads on forecastle deck.  
Two (2) electric-hydraulic driven mooring winches on aft deck.

Cargo holds and cargo deck area equipped for carriage of dangerous goods, according to Part X, SOLAS II-2 Reg.19, as far the vessel is equipped for.

### Safety and fire fighting equipment:

Two (2) inflatable rafts, 14 persons.  
One MOB boat, 6 persons, handled with davit.  
One freefallboat, 14 persons.

### Accommodation / domestic systems:

Air-conditioned, private cabins for thirteen (10) crew members, combined with sanitary facilities.  
One (1) sewage treatment unit  
One (1) evaporator (5 m<sup>3</sup>/24h)

### Electrical installation, power generation:

3 x 440/230 Volt at 60 Hz.  
- Two (2) diesel driven generators of abt. 260 eKw.  
- One (1) emergency generator of abt. 70 eKw.  
- One (1) shaft generator 600 eKw.

### Propulsion / manoeuvring

One (1) medium speed, having a MCR of 3.280 kW at 600 rpm, driving one (1) controllable pitch propeller via a reduction gearbox.  
One (1) high efficient flap type rudder  
One (1) bowthruster, electrical driven, frequency controlled, fixed pitch propeller, capacity 350 kW